

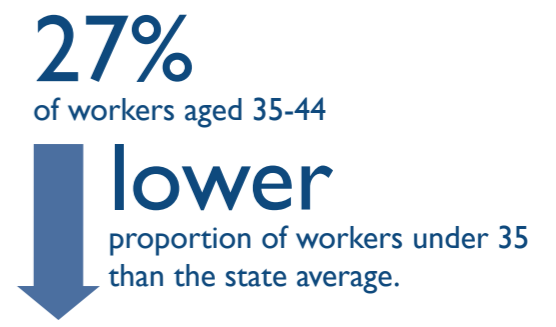
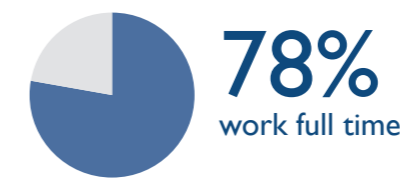
# PROFESSIONAL, SCIENTIFIC AND TECHNICAL SERVICES

INDUSTRY SNAPSHOT 2017

## THE WORKFORCE

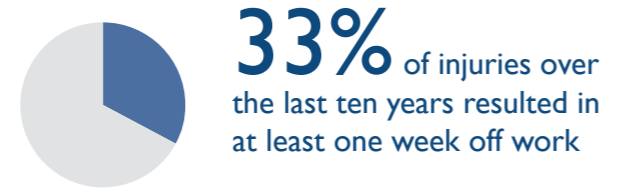
This industry covers a wide range of activities, separated into nine groups

- Architectural, Engineering and Technical Services
- Computer System Design and Related Services
- Management and Related Consulting Services
- Scientific Research Services
- Other Professional, Scientific and Technical Services
- Market Research and Statistical Services
- Advertising Services
- Legal and Accounting Services
- Veterinary Services

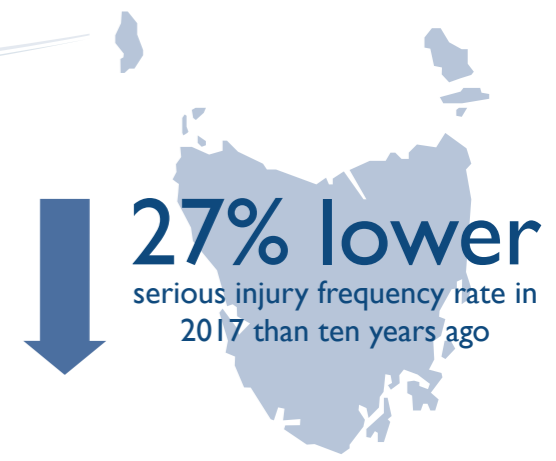


## THE INJURIES

**106** injuries across the industry in 2017



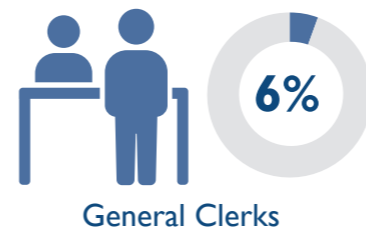
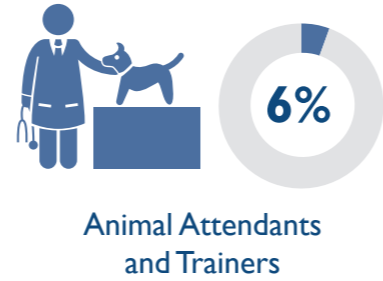
**2.7** serious injuries per million hours worked  
66% lower than the state average of **7.9**



## THE PEOPLE

**55-64 year olds** reported the highest serious injury frequency rate

Occupations with the Highest Percentage of Serious Injuries



The majority of injured employees worked in Management and Related Consulting Services

## THE CAUSES

The most common causes of injury across the industry

- Body stressing
- Falls, slips and trips
- Being hit by moving objects
- Mental stress

## ACTION AREAS

Priority conditions and causes identified in the WorkSafe Strategic Plan 2018-2023 relevant to the industry

- Musculoskeletal disorders
- Hazardous manual tasks
- Mental health conditions
- Slips, trips and falls



For more information contact  
 Phone: 1300 366 322 (within Tasmania)  
 (03) 6166 4600 (outside Tasmania)  
 Fax: (03) 6173 0206  
 Email: wstinfo@justice.tas.gov.au  
 Web: www.worksafe.tas.gov.au

DISCLAIMER: The information provided herein was believed correct at the time of publication. The information is made available for general information only and should not be taken as a substitute for professional advice.