

RENTAL, HIRING AND REAL ESTATE SERVICES

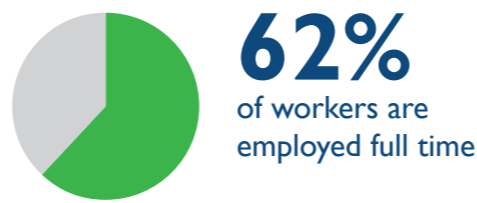
INDUSTRY SNAPSHOT 2019

THE WORKFORCE

This industry covers a wide range of activities, separated into six groups



- Motor Vehicle and Transport Equipment Rental and Hiring
- Farm Animal and Bloodstock Leasing
- Other Goods and Equipment Rental and Hiring
- Non-Financial Intangible Assets (except Copyrights) Leasing
- Property Operators
- Real Estate Services

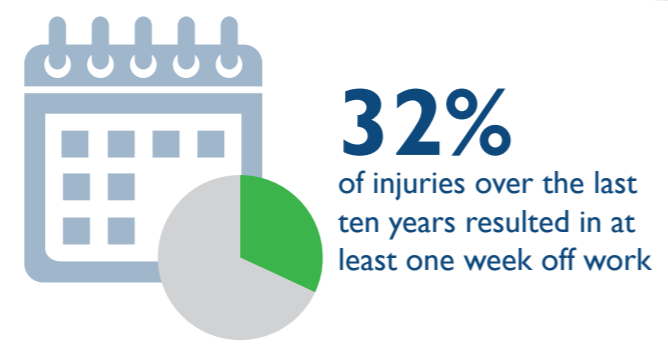


Real Estate Services is the largest employing group, making up 55% of workforce

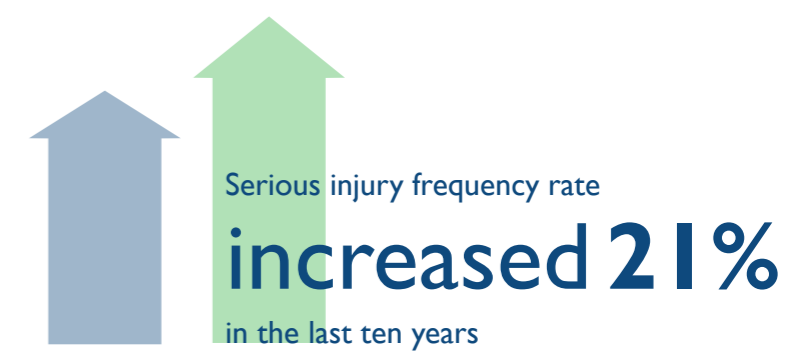
Almost 2x the average proportion of workers aged 65+

THE INJURIES

50 injuries across the industry in 2019



4.1 serious injuries per million hours worked
55% lower than the state average of 9.1



THE PEOPLE

Motor Vehicle and Transport Equipment Rental and Hiring had the highest serious injury frequency rate and the highest number of injuries

Occupations with the highest percentage of serious injuries



Workers aged 15-24 report a higher serious injury frequency rate than other age brackets

THE CAUSES

The most common causes of injury across the industry



ACTION AREAS

Priority conditions and causes identified in the WorkSafe Strategic Plan 2018-2023 relevant to the industry



For more information contact
Phone: 1300 366 322 (within Tasmania)
(03) 6166 4600 (outside Tasmania)
Fax: (03) 6173 0206
Email: wstinfo@justice.tas.gov.au
Web: www.worksafe.tas.gov.au

Published June 2020
DISCLAIMER: The information provided herein was believed correct at the time of publication. The information is made available for general information only and should not be taken as a substitute for professional advice.