

PROFESSIONAL, SCIENTIFIC AND TECHNICAL SERVICES

INDUSTRY SNAPSHOT 2018

THE WORKFORCE

This industry covers a wide range of activities, separated into nine groups

- Architectural, Engineering and Technical Services
- Computer System Design and Related Services
- Management and Related Consulting Services
- Scientific Research Services
- Other Professional, Scientific and Technical Services
- Market Research and Statistical Services
- Advertising Services
- Legal and Accounting Services
- Veterinary Services

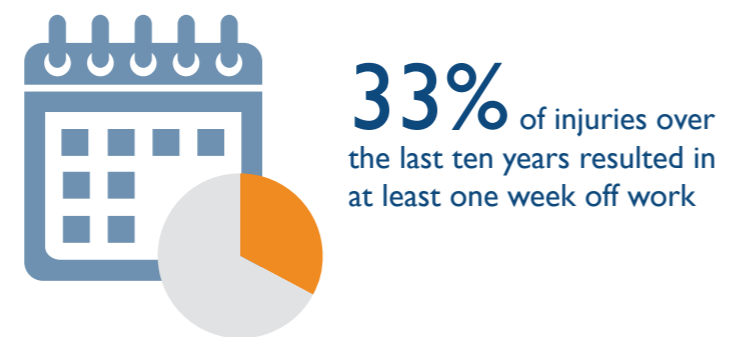


Legal and Accounting Services is the largest employing group



THE INJURIES

122 injuries across the industry in 2018

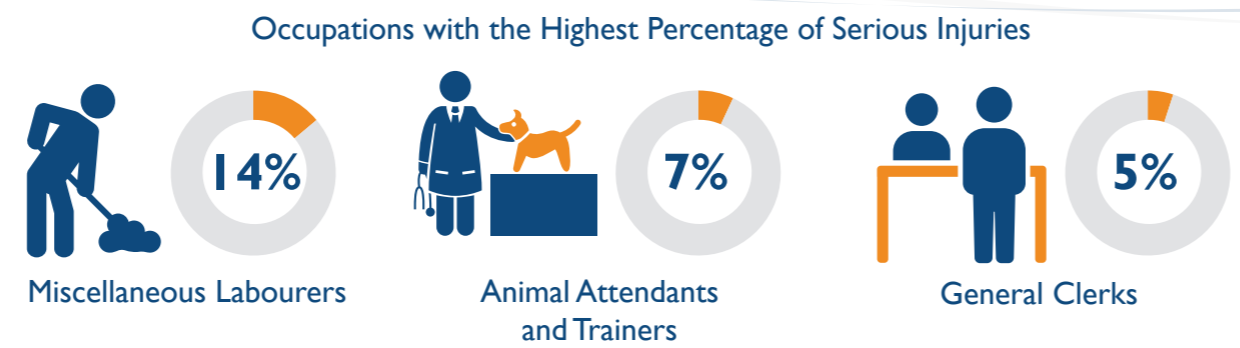


2.7 serious injuries per million hours worked
69% lower than the state average of 8.7

37% lower serious injury frequency rate in 2018 than ten years ago

THE PEOPLE

55+ year olds reported the highest serious injury frequency rate



Management and Related Consulting Services reported the highest serious injury frequency rate and the highest number of injuries

THE CAUSES

The most common causes of injury across the industry

- Body stressing
- Falls, slips and trips
- Being hit by moving objects
- Hitting objects with a part of the body

ACTION AREAS

Priority conditions and causes identified in the WorkSafe Strategic Plan 2018-2023 relevant to the industry

- Musculoskeletal disorders
- Hazardous manual tasks
- Mental health conditions
- Slips, trips and falls



For more information contact
Phone: 1300 366 322 (within Tasmania)
(03) 6166 4600 (outside Tasmania)
Fax: (03) 6173 0206
Email: wstinfo@justice.tas.gov.au
Web: www.worksafe.tas.gov.au

Published August 2019
DISCLAIMER: The information provided herein was believed correct at the time of publication. The information is made available for general information only and should not be taken as a substitute for professional advice.