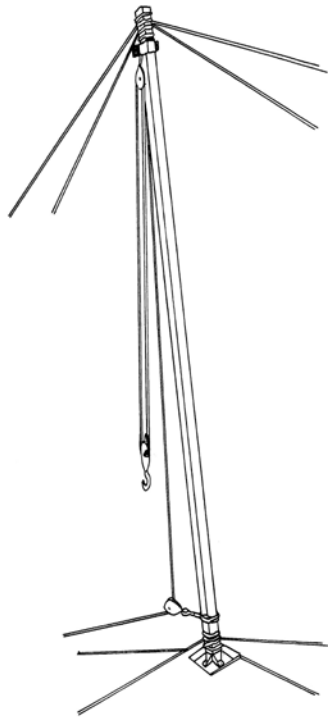
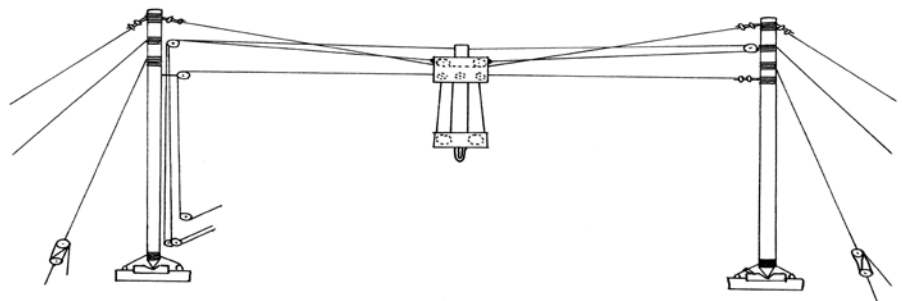


Advanced Rigging – RA



Typical gin pole



Typical flying fox

The scope of work for advanced rigging includes:

- rigging work in the class Intermediate Rigging
- rigging of gin poles and shear legs
- flying foxes and cableways
- guyed derricks and structures
- suspended scaffolds and fabricated hung scaffolds.

It is a prerequisite that applicants for the advanced rigging licence already hold or have previously passed assessment for a dogging, basic and intermediate rigging licence.

You do not require a licence if you are positioning integral outriggers or stabilisers to set up a crane or hoist.

You can erect and dismantle suspended scaffolds and hung scaffolds if you hold an advanced scaffolding licence or equivalent.

You require the intermediate scaffolding licence or equivalent if you are erecting or dismantling tube and coupler suspension rigs for suspended scaffolds.