

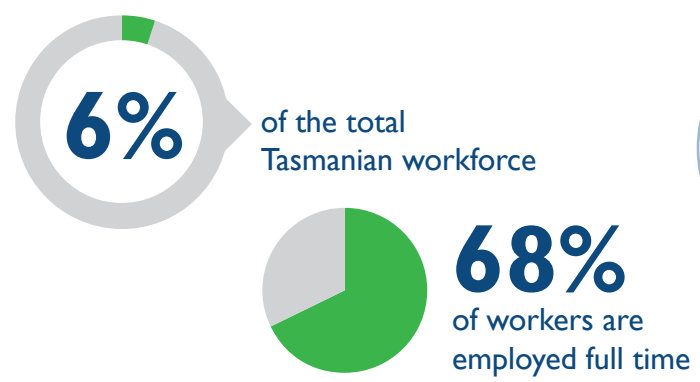
PROFESSIONAL, SCIENTIFIC AND TECHNICAL SERVICES

INDUSTRY SNAPSHOT 2019

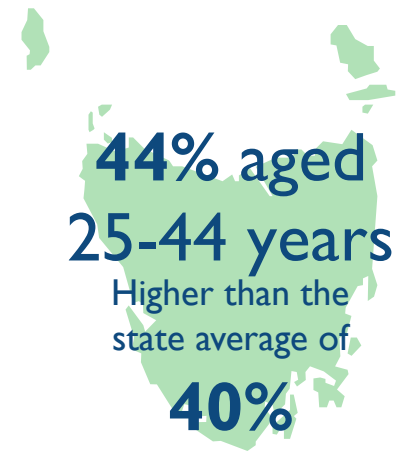
THE WORKFORCE

This industry covers a wide range of activities, separated into nine groups

- Architectural, Engineering and Technical Services
- Computer System Design and Related Services
- Management and Related Consulting Services
- Scientific Research Services
- Other Professional, Scientific and Technical Services
- Market Research and Statistical Services
- Advertising Services
- Legal and Accounting Services
- Veterinary Services

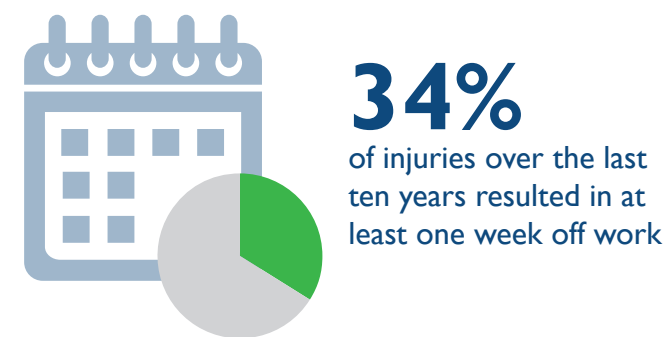


Architectural, Engineering and Technical Services is the largest employing group in 2019



THE INJURIES

128 injuries across the industry in 2019



2.2 serious injuries per million hours worked
LOWEST OF ALL INDUSTRIES
75% lower than the state average of 9.1



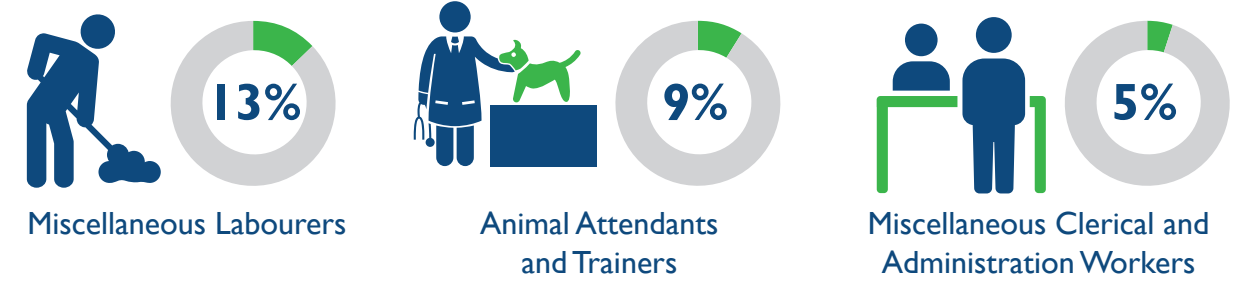
36% lower serious injury frequency rate in 2019 than ten years ago

THE PEOPLE

55+ year olds reported the highest serious injury frequency rate

Management and Related Consulting Services reported the highest serious injury frequency rate and the highest number of injuries

Occupations with the highest percentage of serious injuries



THE CAUSES

The most common causes of injury across the industry



ACTION AREAS

Priority conditions and causes identified in the WorkSafe Strategic Plan 2018-2023 relevant to the industry



For more information contact
Phone: 1300 366 322 (within Tasmania)
(03) 6166 4600 (outside Tasmania)
Fax: (03) 6173 0206
Email: wstinfo@justice.tas.gov.au
Web: www.worksafe.tas.gov.au

Published June 2020
DISCLAIMER: The information provided herein was believed correct at the time of publication. The information is made available for general information only and should not be taken as a substitute for professional advice.