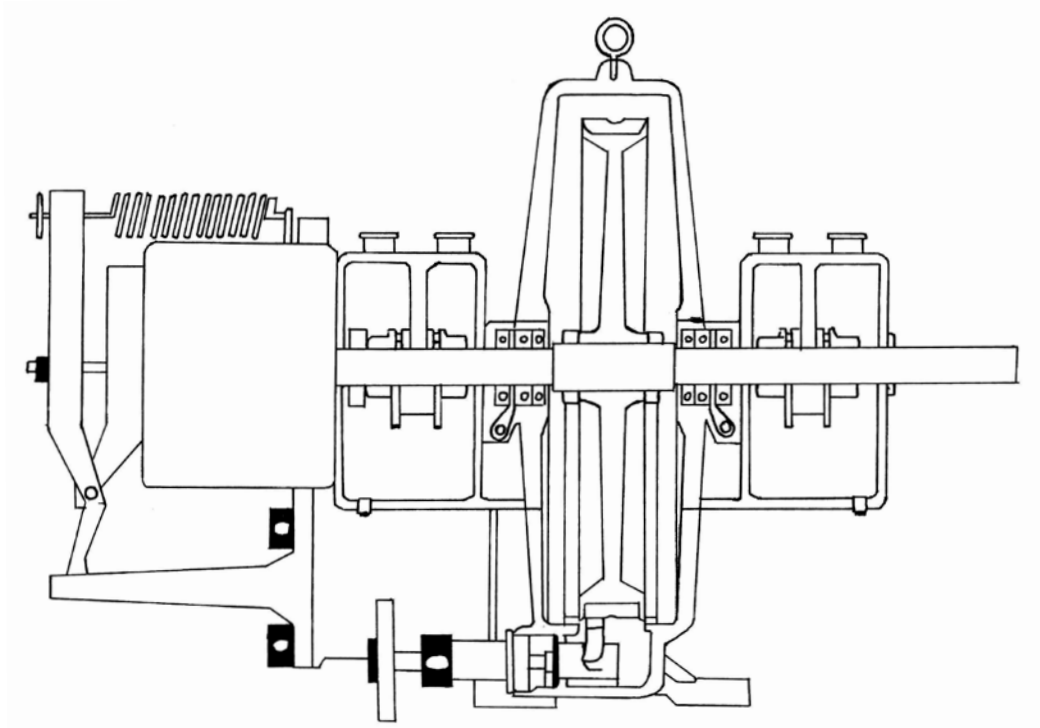


Turbine Operation – TO



The class includes the operation of a steam turbine that has an output of 500kW or more and includes one of the following:

- multi-wheeled
- capable of a speed greater than 3600 revolutions per minute
- has attached condensers
- has a multi-staged heat exchange extraction process

A steam turbine means equipment that is driven by steam acting on a turbine or rotor to cause a rotary motion.