

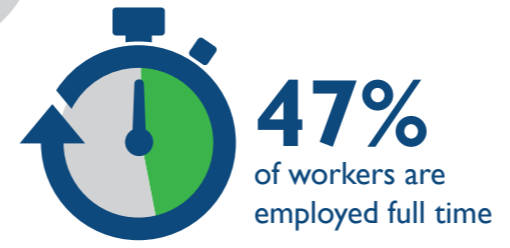
ARTS AND RECREATION SERVICES

INDUSTRY SNAPSHOT 2019

THE WORKFORCE

This industry covers a wide range of activities, separated into seven groups

- Sports and Physical Recreation Activities
- Amusement and Other Recreation Activities
- Gambling Activities
- Horse and Dog Racing Activities
- Creative and Performing Arts Activities
- Museum Operation
- Parks and Garden Operations

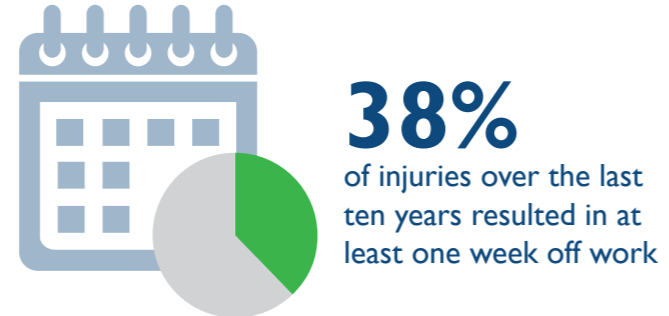


Sports and Physical Recreation Activities is the largest employing group

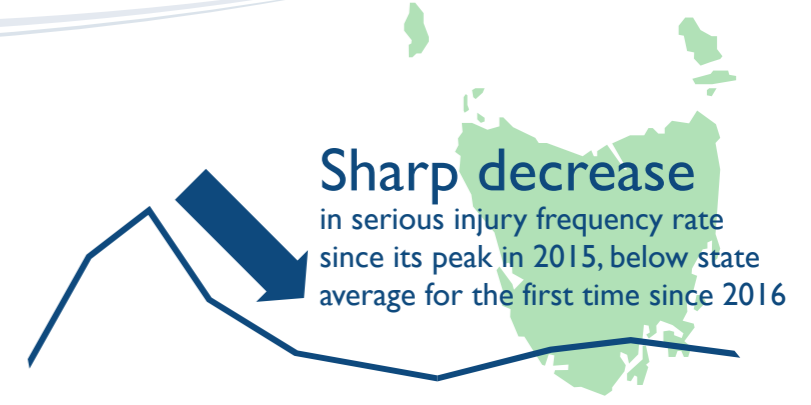
1 in 3 are aged under 25 years

THE INJURIES

167 injuries across the industry in 2019



6.1 serious injuries per million hours worked
32% lower than the state average of 9.1



THE PEOPLE

Occupations with the highest percentage of serious injuries

25-34 year olds reported the highest serious injury frequency rate



1 in 4 serious injuries were reported by those employed in the Gambling Activities industry group

Horse and Dog Racing Activities reported the highest serious injury frequency rate



THE CAUSES

The most common causes of injury across the industry

- Body stressing
- Falls, slips and trips
- Being hit by moving objects
- Mental stress

ACTION AREAS

Priority conditions and causes identified in the WorkSafe Strategic Plan 2018-2023 relevant to the industry

- Musculoskeletal disorders
- Hazardous manual tasks
- Slips, trips and falls
- Mental health conditions



For more information contact
 Phone: 1300 366 322 (within Tasmania)
 (03) 6166 4600 (outside Tasmania)
 Fax: (03) 6173 0206
 Email: wstinfo@justice.tas.gov.au
 Web: www.worksafe.tas.gov.au

Published June 2020
 DISCLAIMER: The information provided herein was believed correct at the time of publication. The information is made available for general information only and should not be taken as a substitute for professional advice.