

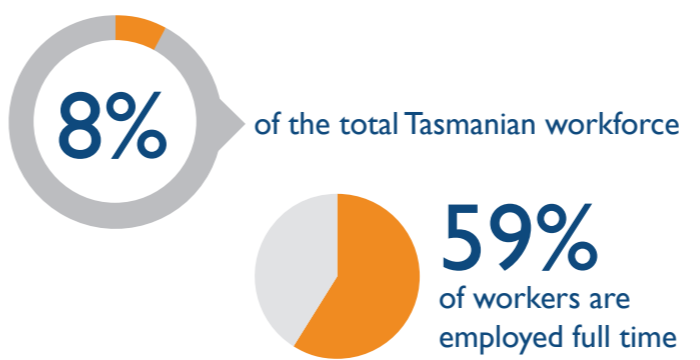
EDUCATION AND TRAINING

INDUSTRY SNAPSHOT 2018

THE WORKFORCE

This industry covers a range of activities, separated into five groups

- 
• Preschool Education
- 
• School Education
- 
• Tertiary Education
- 
• Adult, Community and Other Education
- 
• Educational Support Services



2 in 3 workers are employed in **School Education**

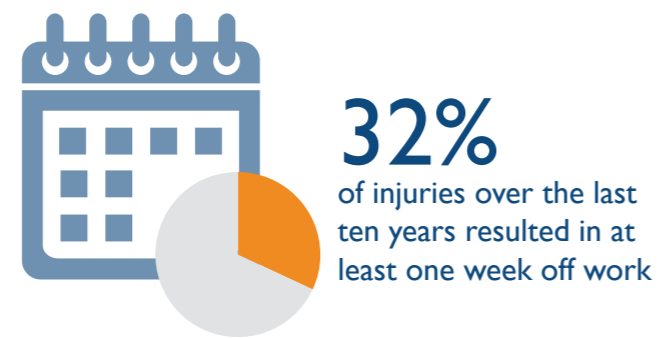


52% are aged 45+



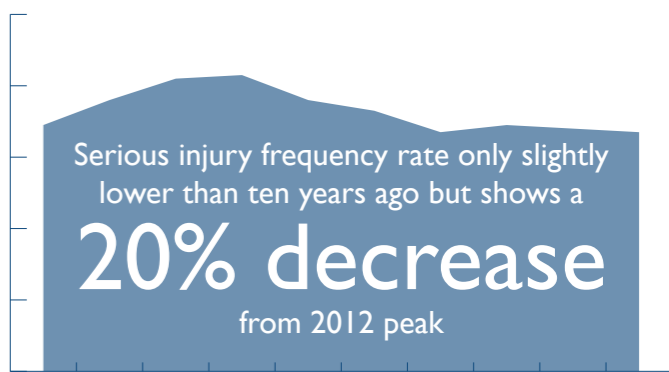
THE INJURIES

583 injuries across the industry in 2018



6.7 serious injuries per million hours worked

23% lower than the state average of **8.7**



THE PEOPLE

School Education had the highest serious injury frequency rate



Occupations with the Highest Percentage of Serious Injuries

- 
38%
School Teachers
- 
21%
Cleaners and Laundry Workers
- 
13%
Education Aides

Workers 55+ reported the highest serious injury frequency rate



THE CAUSES

The most common causes of injury across the industry

- 
Body stressing
- 
Falls, slips and trips
- 
Mental stress

ACTION AREAS

Priority conditions and causes identified in the WorkSafe Strategic Plan 2018-2023 relevant to the industry

- 
Musculoskeletal disorders
- 
Hazardous manual tasks
- 
Slips, trips and falls
- 
Mental health conditions



For more information contact
 Phone: 1300 366 322 (within Tasmania)
 (03) 6166 4600 (outside Tasmania)
 Fax: (03) 6173 0206
 Email: wstinfo@justice.tas.gov.au
 Web: www.worksafe.tas.gov.au

Published August 2019
 DISCLAIMER: The information provided herein was believed correct at the time of publication. The information is made available for general information only and should not be taken as a substitute for professional advice.