

MANUFACTURING

INDUSTRY SNAPSHOT 2017

THE WORKFORCE

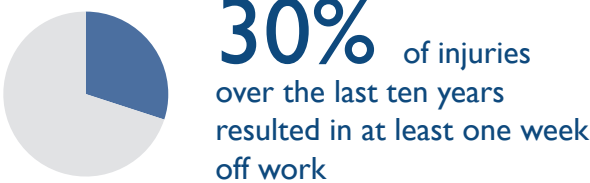
This industry covers a wide range of activities, separated into over 50 groups. The eight largest groups in Tasmania are:



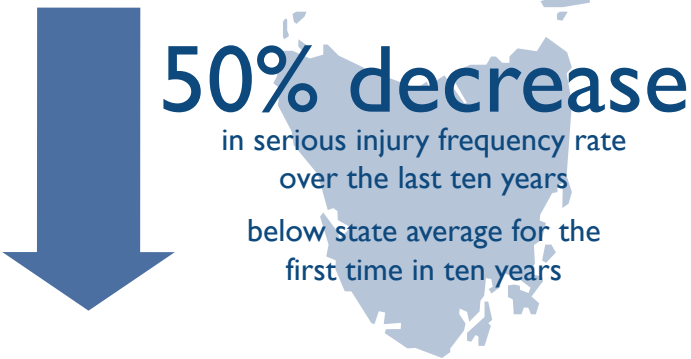
Lower than state average proportion of workers aged 45+

THE INJURIES

723 injuries across the industry in 2017



8 serious injuries per million hours worked similar to the state average of 7.9



THE PEOPLE

Structural Metal Product Manufacturing had the highest serious injury frequency rate

Occupations with the Highest Percentage of Serious Injuries



Workers aged 24 and under report a higher serious injury frequency rate than other age brackets

THE CAUSES

The most common causes of injury across the industry



ACTION AREAS

Priority conditions and causes identified in the WorkSafe Strategic Plan 2018-2023 relevant to the industry



For more information contact
Phone: 1300 366 322 (within Tasmania)
(03) 6166 4600 (outside Tasmania)
Fax: (03) 6173 0206
Email: wstinfo@justice.tas.gov.au
Web: www.worksafe.tas.gov.au

DISCLAIMER: The information provided herein was believed correct at the time of publication. The information is made available for general information only and should not be taken as a substitute for professional advice.