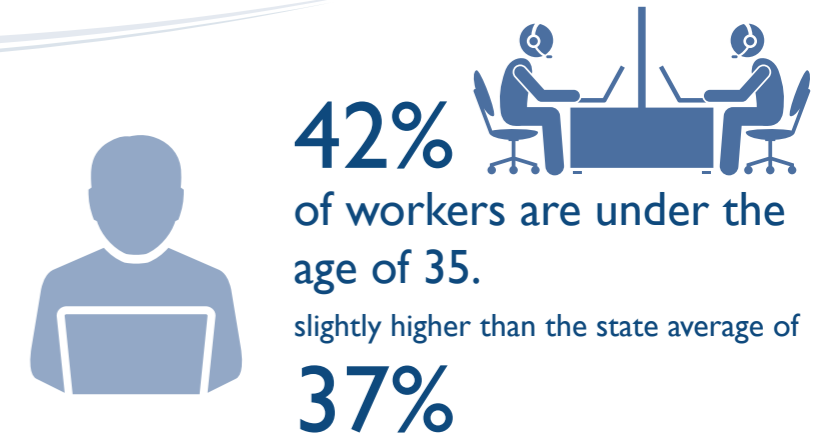


ADMINISTRATIVE AND SUPPORT SERVICES

INDUSTRY SNAPSHOT 2017

THE WORKFORCE

This industry covers a wide range of activities, separated into five groups



THE INJURIES

228 injuries across the industry in 2017

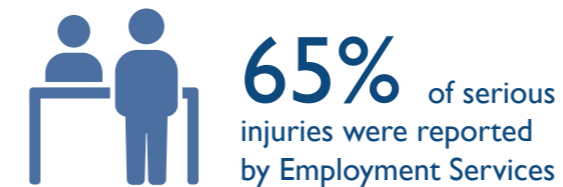
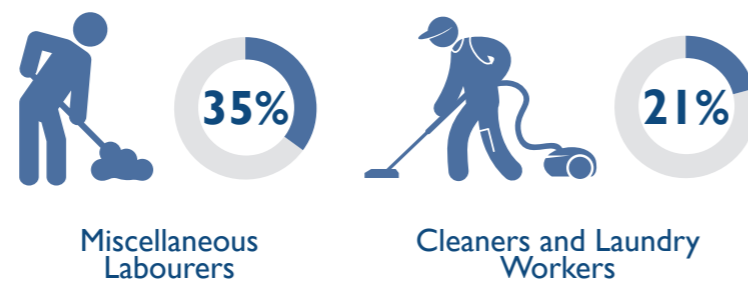


↑ above average
serious injury frequency rate has been above state average each year for ten years

THE PEOPLE

Workers aged under 35 reported the highest serious injury frequency rate

Occupations with the Highest Percentage of Serious Injuries



THE CAUSES

The most common causes of injury across the industry



ACTION AREAS

Priority conditions and causes identified in the WorkSafe Strategic Plan 2018-2023 relevant to the industry



For more information contact
Phone: 1300 366 322 (within Tasmania)
(03) 6166 4600 (outside Tasmania)
Fax: (03) 6173 0206
Email: wstinfo@justice.tas.gov.au
Web: www.worksafe.tas.gov.au

DISCLAIMER: The information provided herein was believed correct at the time of publication. The information is made available for general information only and should not be taken as a substitute for professional advice.