

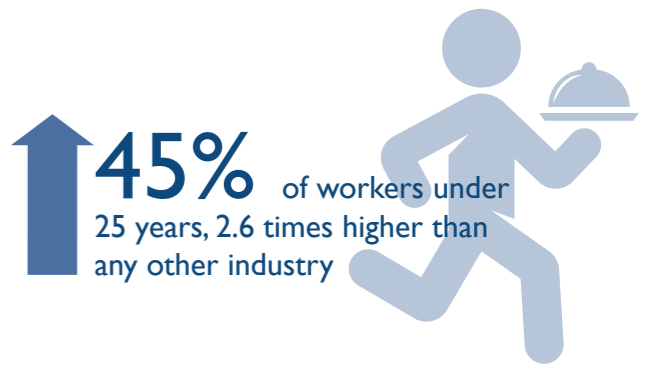
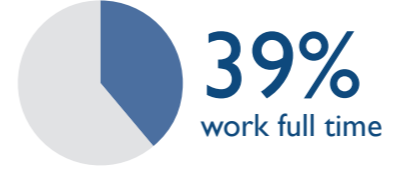
ACCOMMODATION AND FOOD SERVICES

INDUSTRY SNAPSHOT 2017

THE WORKFORCE

This industry covers a wide range of activities, separated into 4 groups

-  Cafes, Restaurants and Takeaway Food Services
-  Accommodation
-  Pubs, Taverns and Bars
-  Clubs (Hospitality)




THE INJURIES

315 injuries across the industry in 2017



6 serious injuries per million hours worked
24% lower than the state average of **7.9**

 serious injury frequency rate remained stable over the last 10 years but below state average each year

THE PEOPLE

45-54 year olds reported the highest serious injury frequency rate



The majority of seriously injured employees worked in Accommodation




Occupations with the Highest Percentage of Serious Injuries

-  **20%** Cleaners and Laundry Workers
-  **19%** Hospitality Workers
-  **19%** Food Trades Workers


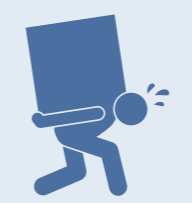


THE CAUSES

The most common causes of injury across the industry

-  Body stressing
-  Falls, slips and trips
-  Being hit by moving objects
-  Mental stress

ACTION AREAS

Priority conditions and causes identified in the WorkSafe Strategic Plan 2018-2023 relevant to the industry

-  Musculoskeletal disorders
-  Hazardous manual tasks
-  Slips, trips and falls
-  Mental health conditions



For more information contact
 Phone: 1300 366 322 (within Tasmania)
 (03) 6166 4600 (outside Tasmania)
 Fax: (03) 6173 0206
 Email: wstinfo@justice.tas.gov.au
 Web: www.worksafe.tas.gov.au

DISCLAIMER: The information provided herein was believed correct at the time of publication. The information is made available for general information only and should not be taken as a substitute for professional advice.