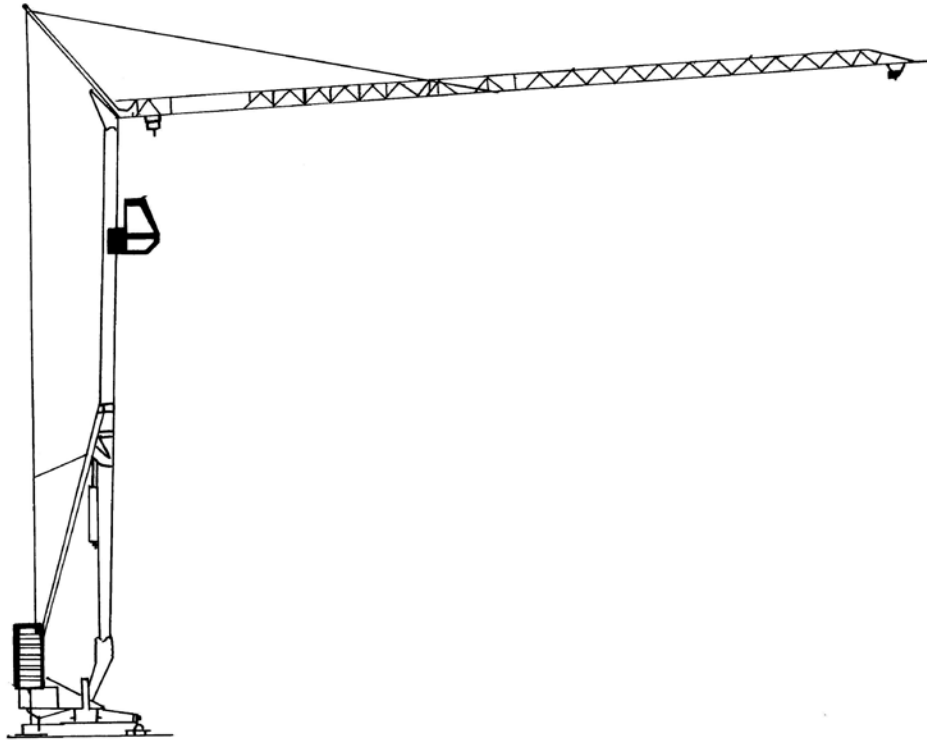


Self Erecting Tower Crane – CS



The scope for this licence class covers the operation of all self-erecting tower cranes.

Self-erecting tower crane means a crane that is not disassembled into a tower element and a boom or jib element in the normal course of use and where the erection and dismantling processes are an inherent part of the crane's function

Self-erecting tower cranes lift themselves from the ground or lift an upper, telescoping section using jacks, allowing the next section of the tower to be inserted at ground level or lifted into place by the partially erected crane. Therefore they can be assembled without outside help, and can grow together with the building or structure they are erecting.